



Nottingham Trent
University

Newton and Arkwright

Generic Emergency Evacuation Plan

Levels: 3

Date: 31st March 2022

PURPOSE

The purpose of a Generic Emergency Evacuation Plan (GEEP) is to enable visitors to the building, including those who may not be able to evacuate unaided, to become familiar with the layout, evacuation procedures, available equipment, and communication devices. For further information please contact NTU's Fire Safety Manager on alex.graham@ntu.ac.uk

THE BUILDING

The Newton and Arkwright building comprises of 10 accessible levels (0-10), all are accessible by lift. Lifts 'A' and 'F' may be used in the event of a fire for evacuation. Refuge points are available on all accessible levels. Emergency Voice Communication (EVC) systems are present at all refuge points, which link directly to the NTU security control room (see attached floor plan). Fire exits on level 0 and 1 provide level access. Evacuation chairs are available in the Arkwright side of the building (see attached floor plan).

ACTION REQUIRED ON HEARING A CONTINUOUS FIRE ALARM

If able, you should leave the building immediately by the nearest fire exit (see attached floor plan) and report to the assigned assembly point for the building. If you discover a fire, activate the nearest break glass call point located at final exit routes. If you are unable to evacuate the building unaided, please proceed to the closest safe refuge point. All staff present are trained Fire Wardens and are responsible for ensuring that each floor level is evacuated. If you require assistance speak to a staff member. An EVC system is available at each refuge point, use this contact the NTU Security team

and notify them of your location, details of which are printed on the front of the panel. Full details of how to use the emergency call point are also provided at refuge points.

OTHER RECOMMENDATIONS

It is recommended that all visitors of The Students' Union Building should familiarise themselves with the fire alarm signals and floor layout. Floor plans and evacuation equipment locations have been provided within this document.

EQUIPMENT PROVIDED

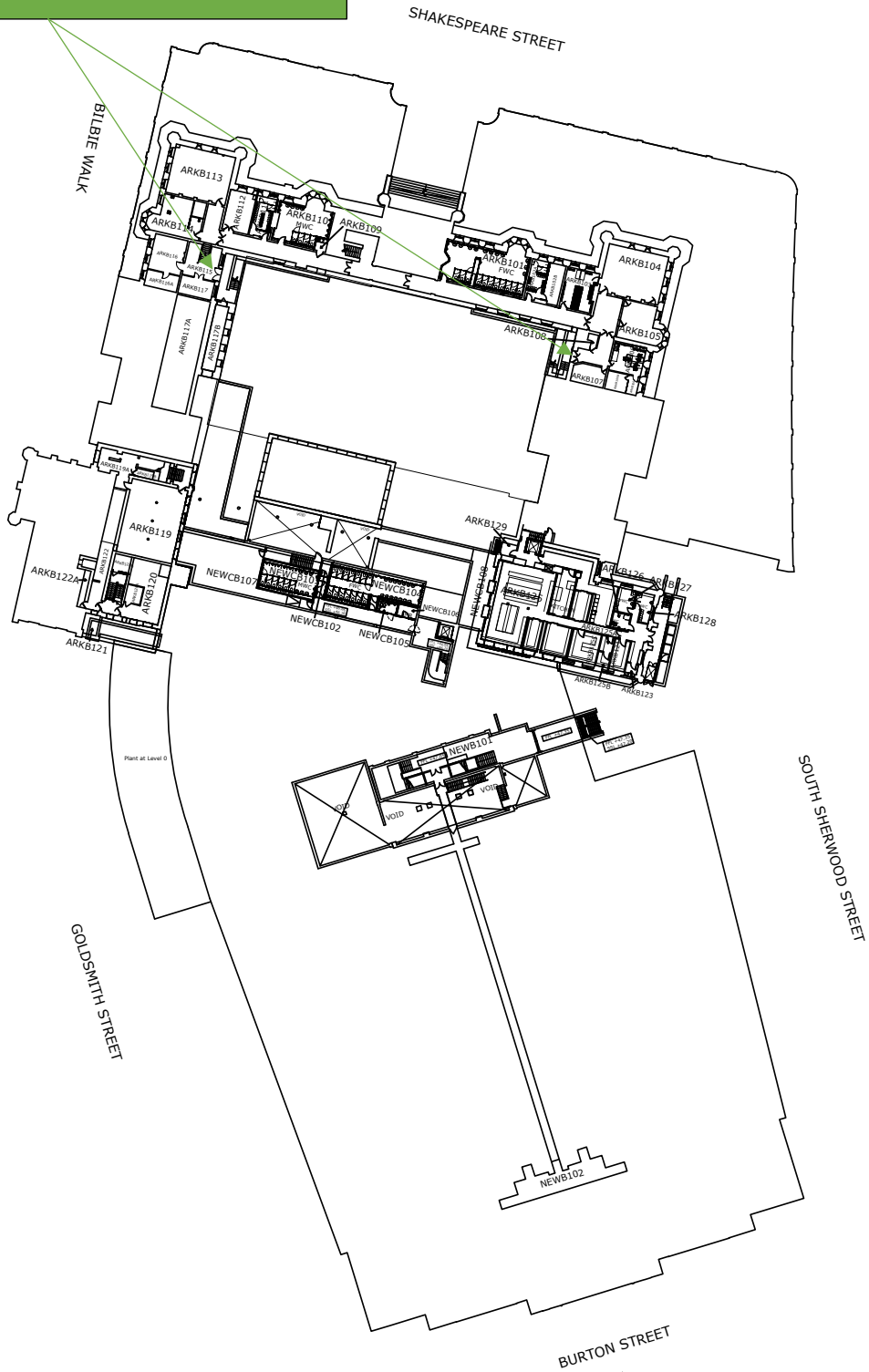
Fire exits providing level access are available at levels 0 and 1. Refuge points with EVC system are provided on all accessible levels (see attached floor plan). Evacuation chairs are available in the Arkwright side of the building and fire evacuation lifts are present (lifts A and F).



YOUR FIRE ASSEMBLY POINTS ARE:

- ***Across the road on Goldsmith Street***
- ***The bottom of North Sherwood Street***
- ***Across the road opposite Arkwright entrance***
- ***Goldsmith Street (Outside Maudsley)***

**FIRE EXIT – LEADS TO BENEFACTORS COURT
– NOT LEVEL ACCESS**



**NEWTON &
ARKWRIGHT
BASEMENT LEVEL**



FIRE EXIT – NOT LEVEL ACCESS

REFUGE POINT

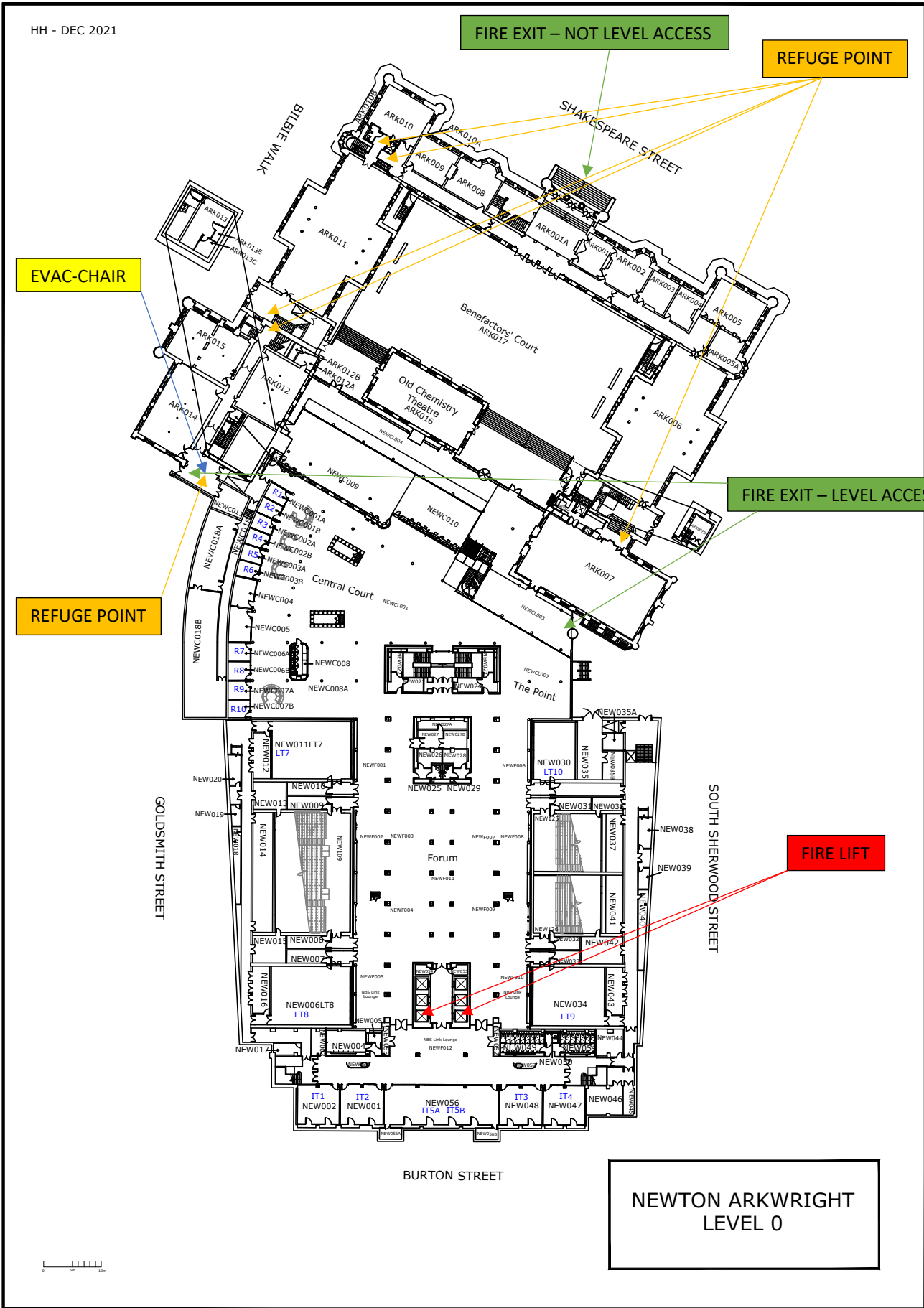
EVAC-CHAIR

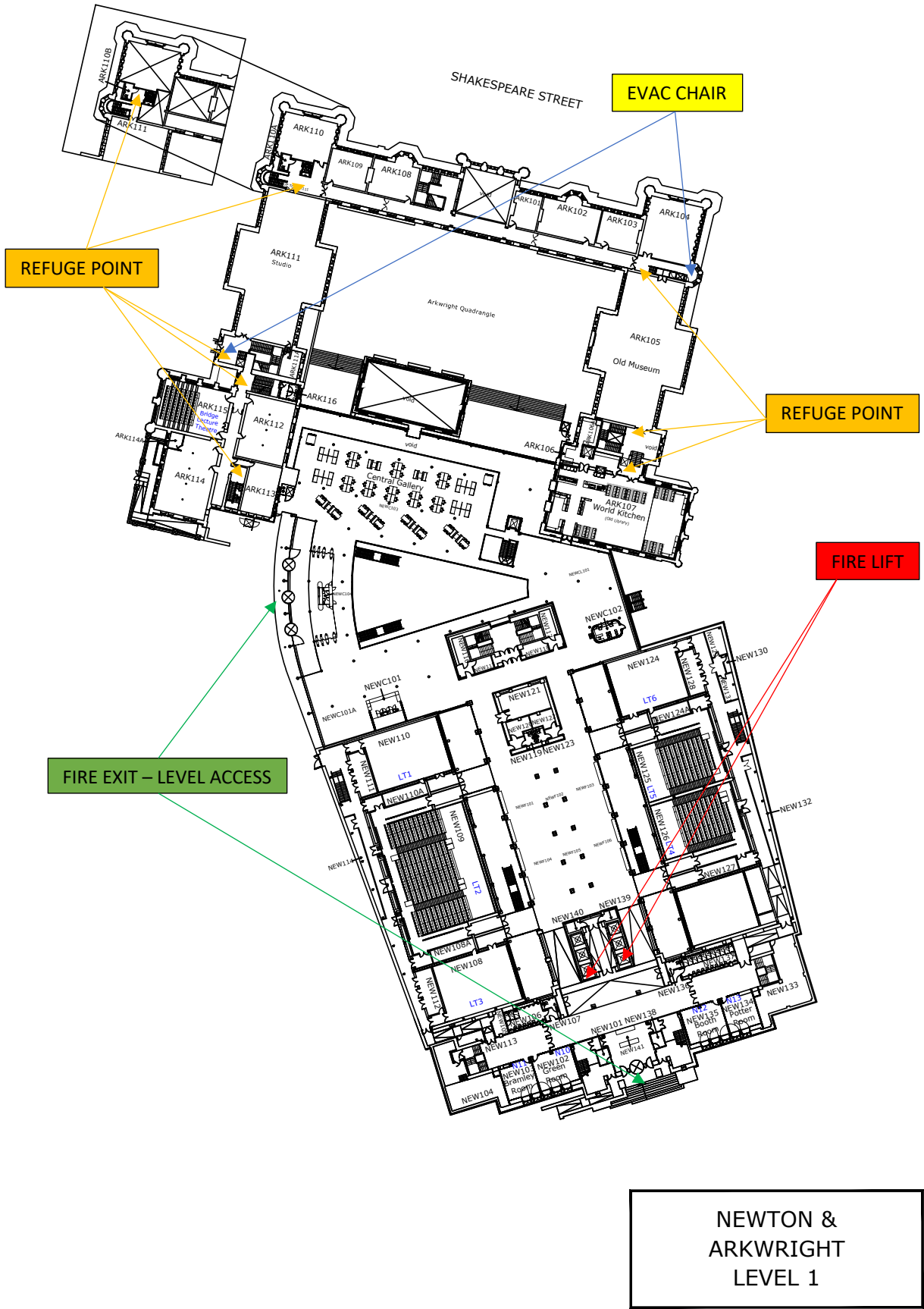
FIRE EXIT – LEVEL ACCESS

REFUGE POINT

FIRE LIFT

NEWTON ARKWRIGHT
LEVEL 0





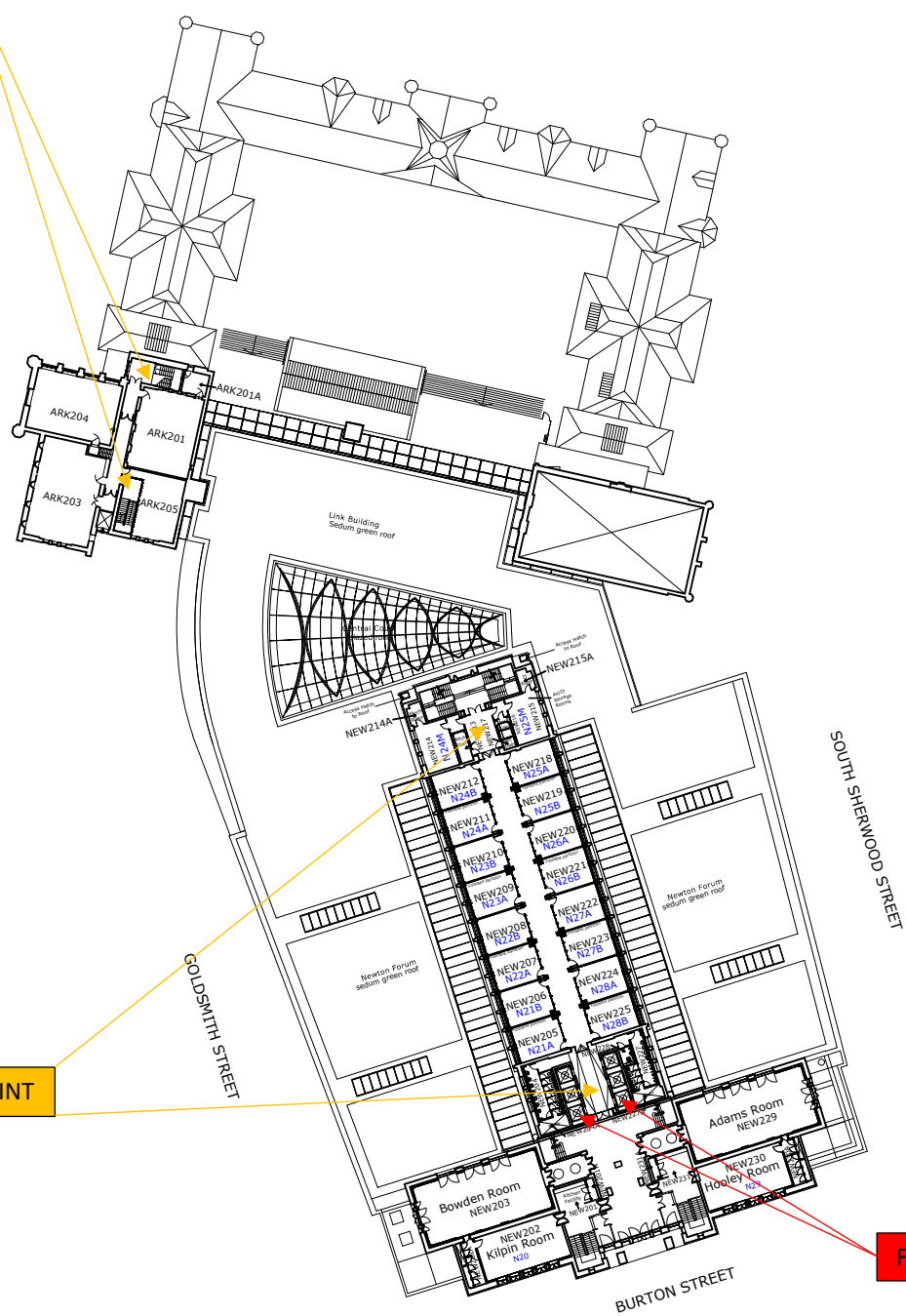
NEWTON & ARKWRIGHT
LEVEL 1

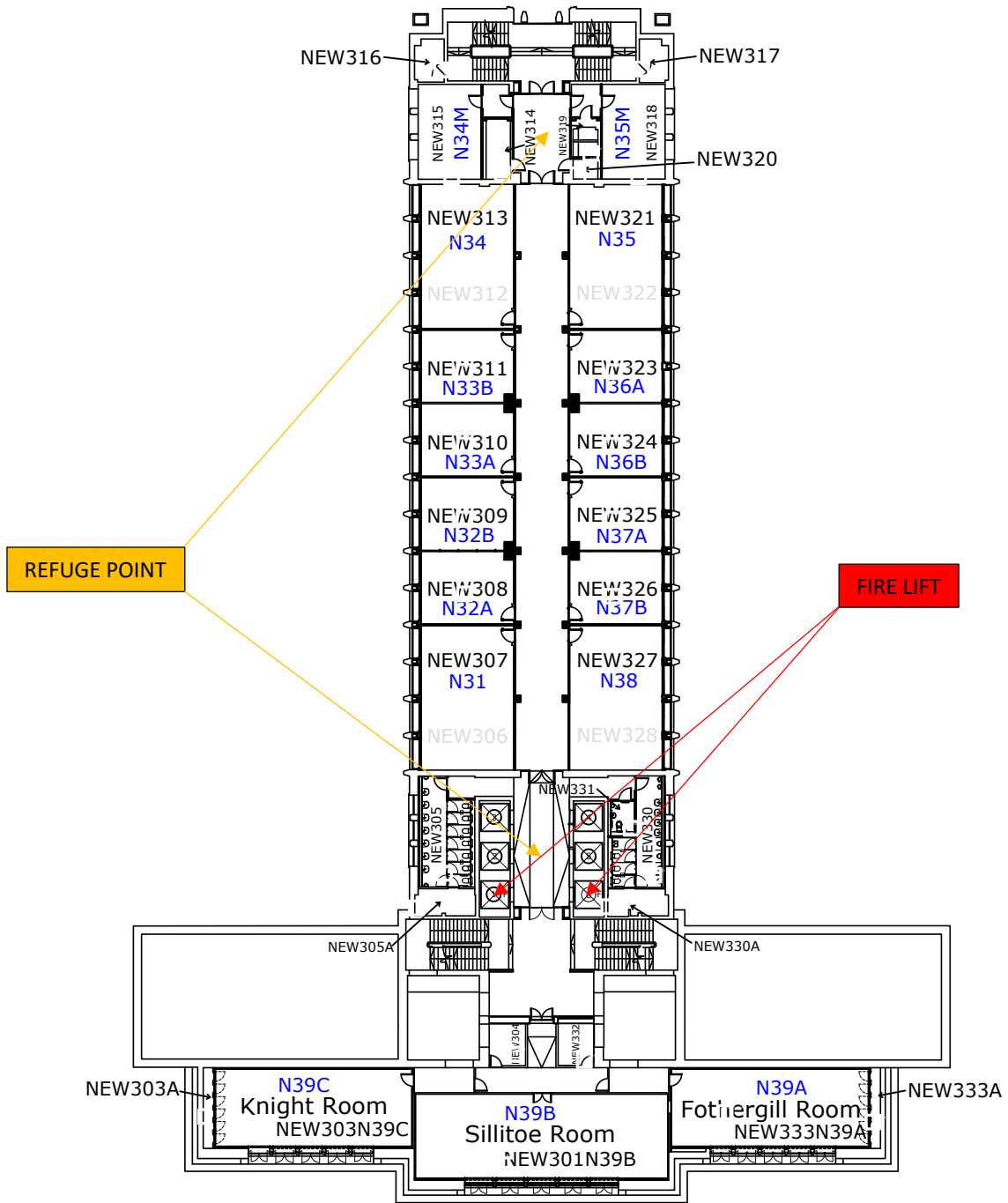
REFUGE POINT

REFUGE POINT

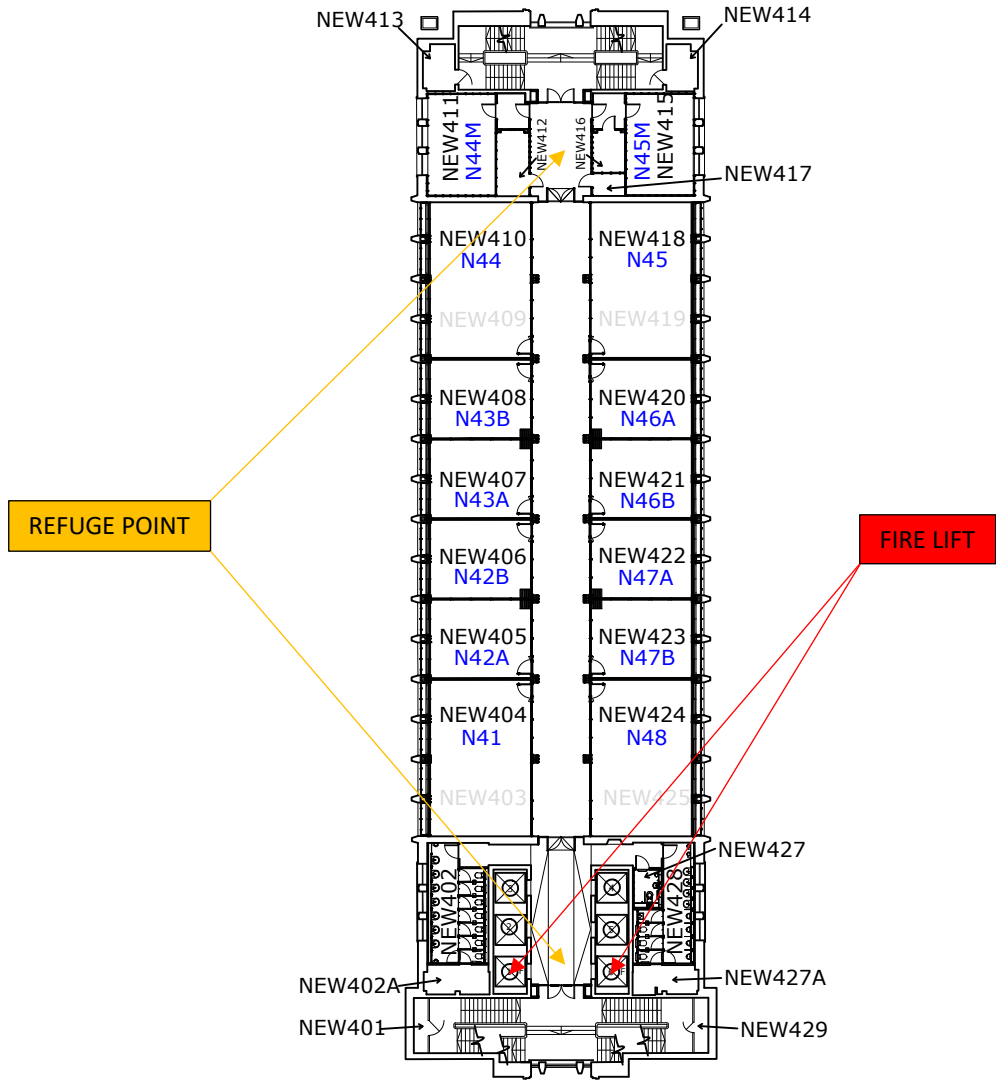
FIRE LIFT

NEWTON &
ARKWRIGHT
LEVEL 2



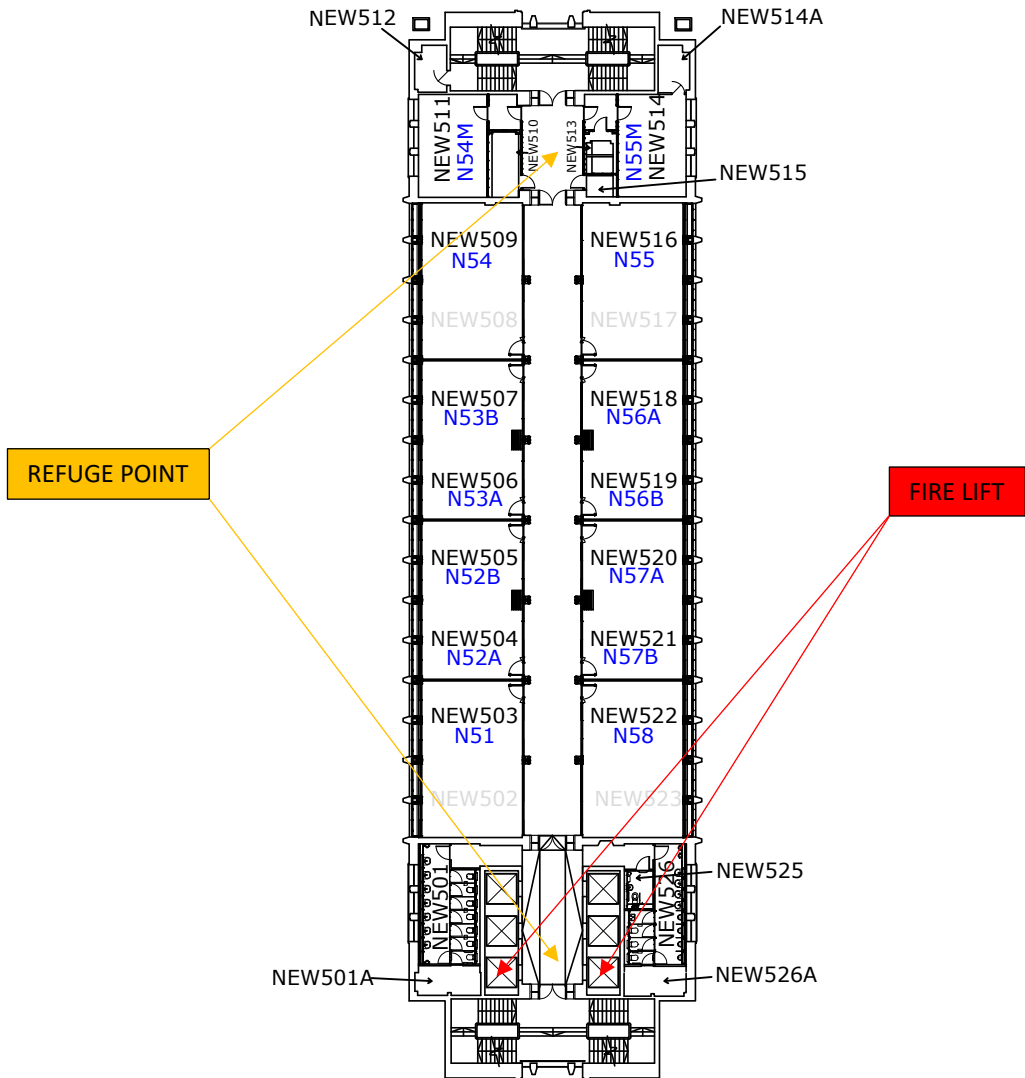


NEWTON
LEVEL 3



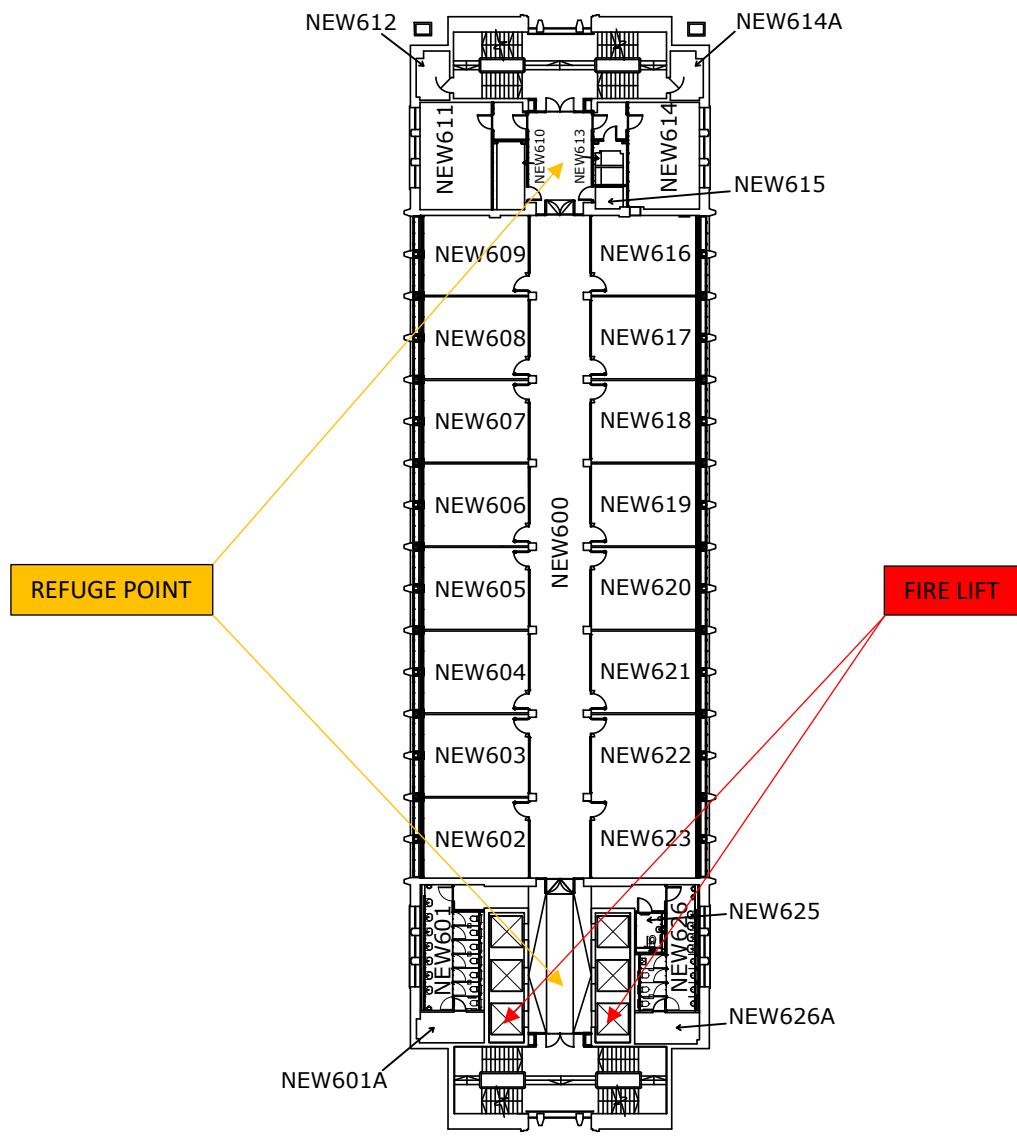
NEWTON & ARKWRIGHT
LEVEL 4





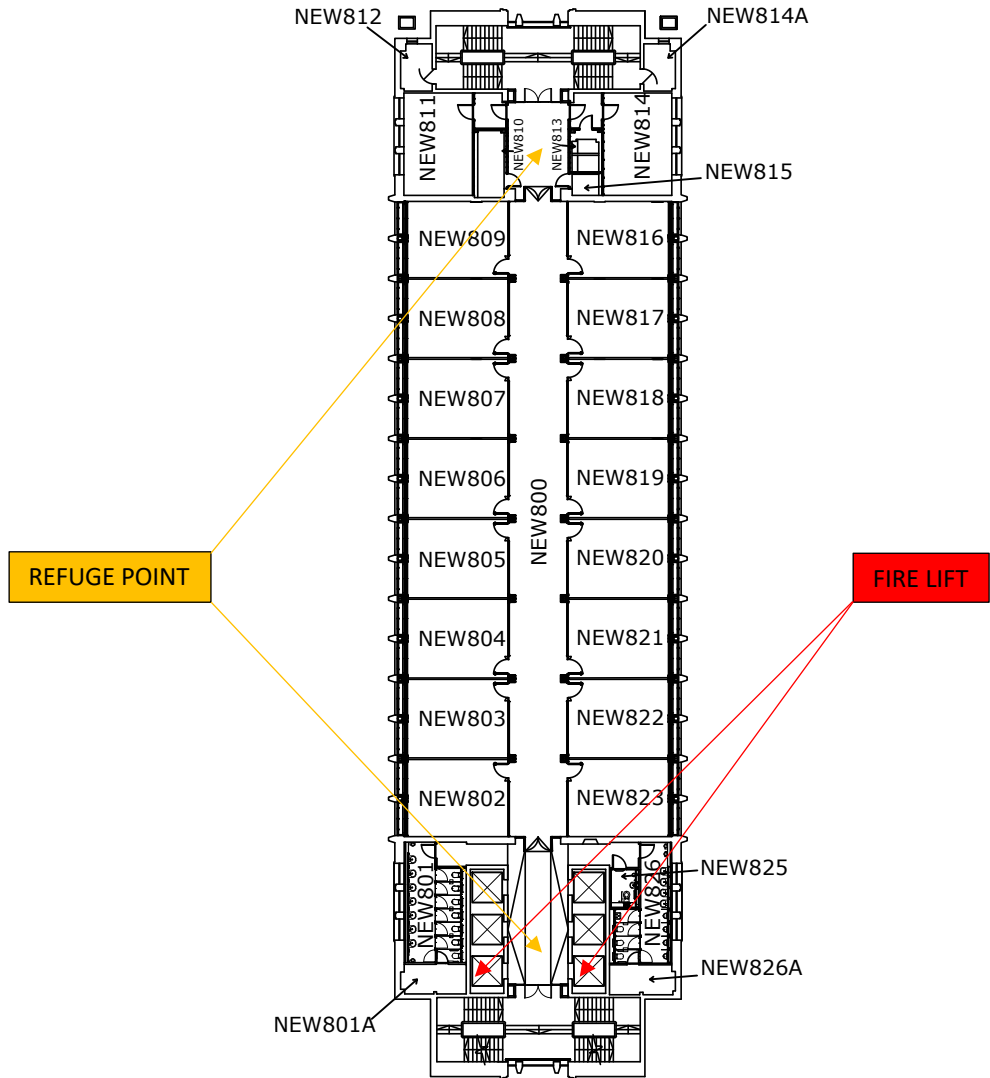
NEWTON & ARKWRIGHT
LEVEL 5





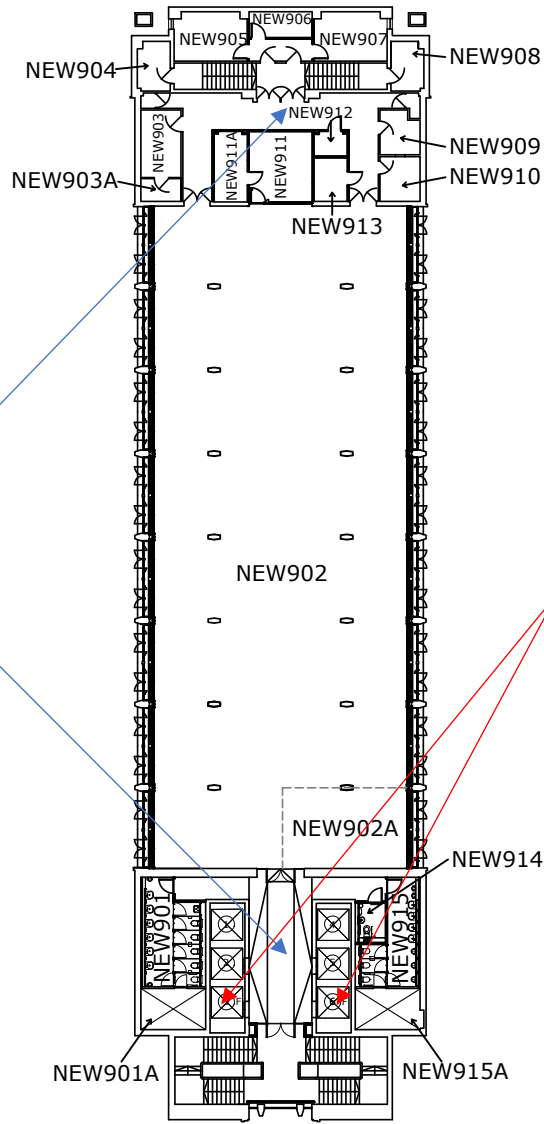
NEWTON & ARKWRIGHT
LEVEL 6





NEWTON & ARKWRIGHT
LEVEL 8

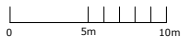


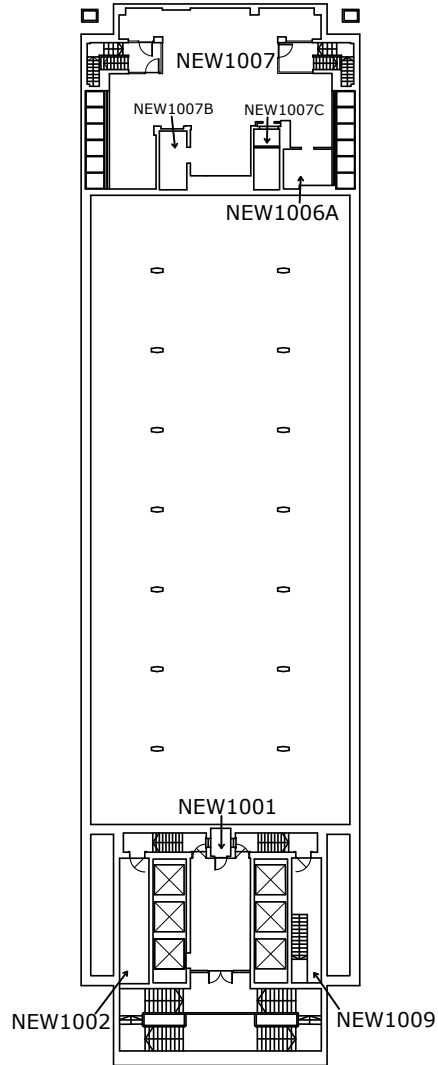


REFUGE POINT

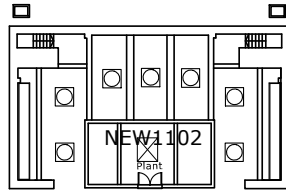
FIRE LIFT

NEWTON & ARKWRIGHT
LEVEL 9

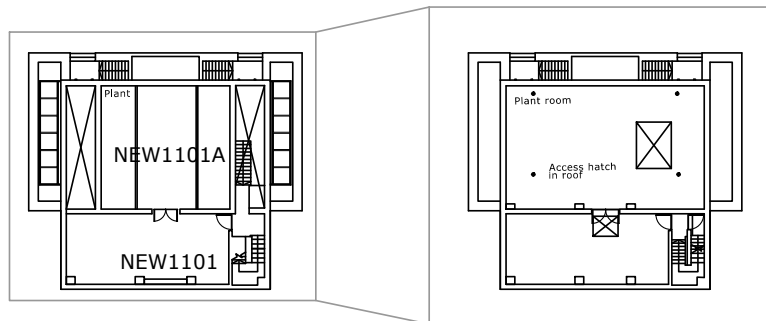




NEWTON & ARKWRIGHT
LEVEL 10



Roof Level



NEWTON & ARKWRIGHT
LEVEL 11

